

**This is a portfolio containing images.
Please look at five of them.**



(Not including this one.)


**Alexander Pagliere
These Men Are Professionals, LLC.**

**(206) 552-0850
asp@tmapllc.com**

*** indicates a Metalworks & Design project I worked on.**



I made
this
hammer
in a fire.

A close-up photograph of a dark, possibly black-painted, metal table leg. The leg is composed of two main parts: a vertical section and a horizontal section that forms the base. These two sections are joined at a 90-degree angle with a prominent, raised weld bead. The weld bead has a distinct, repetitive pattern of small, rounded protrusions. The metal surface is smooth and has a matte finish. The background is out of focus, showing a light-colored wooden surface, likely the table top, and a white, ribbed object, possibly a fan or a piece of equipment, in the upper left corner.

I welded and
blackened this
table leg.

The sides are welded too,
but I sanded them flat.

This staircase is cantilevered from a stringer hidden inside the wall.



And glass is hanging off of it.

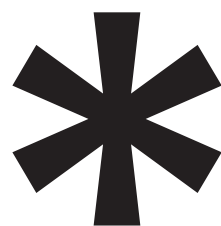


**This staircase is one
continuous 1/4”
steel plate.**





I made these out of aluminum.



That's five pictures.

There are more if you keep going.

You don't have to.

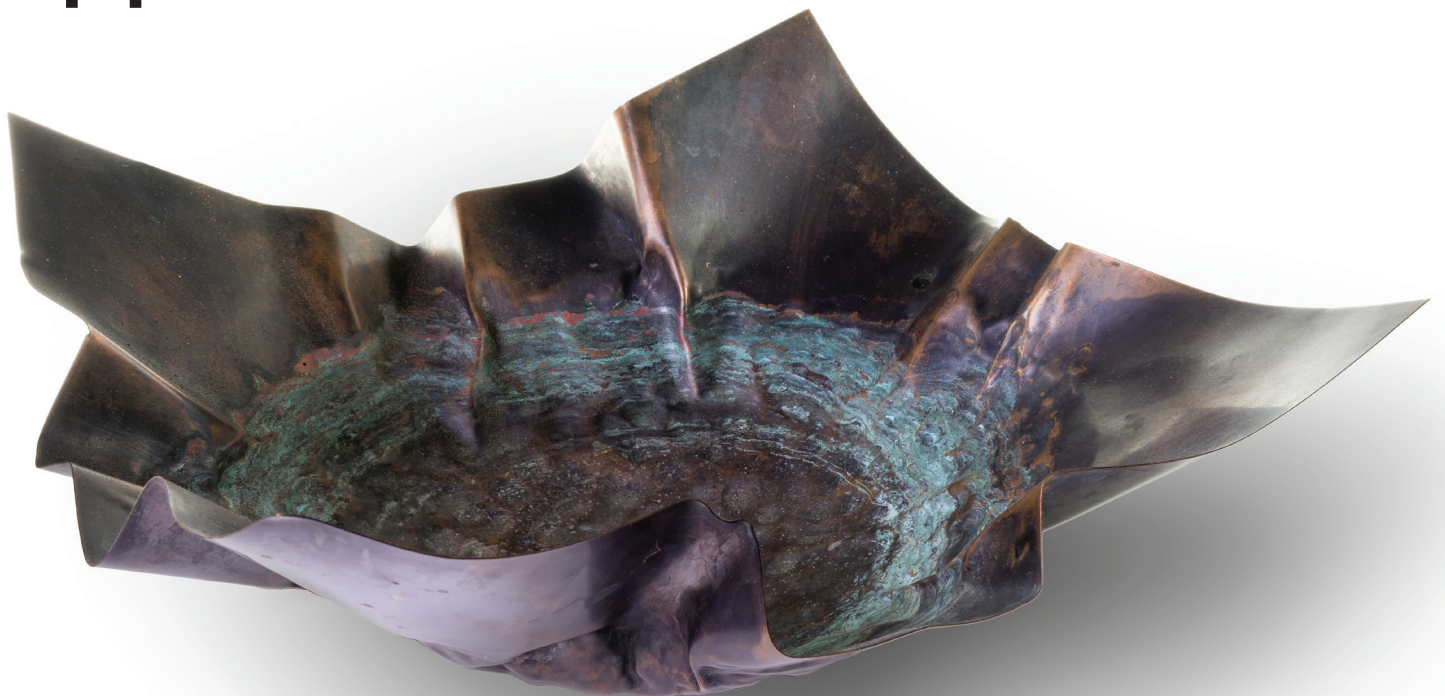


(obviously)

**Here's that big
staircase again.**



copper + walnut + time





*



TILT



a new lamp by
Graypants

Yes, I can
weld aluminum

300 amps
85% DCEN
ceriated tungsten
6061 with 4043

Rapid prototyping:

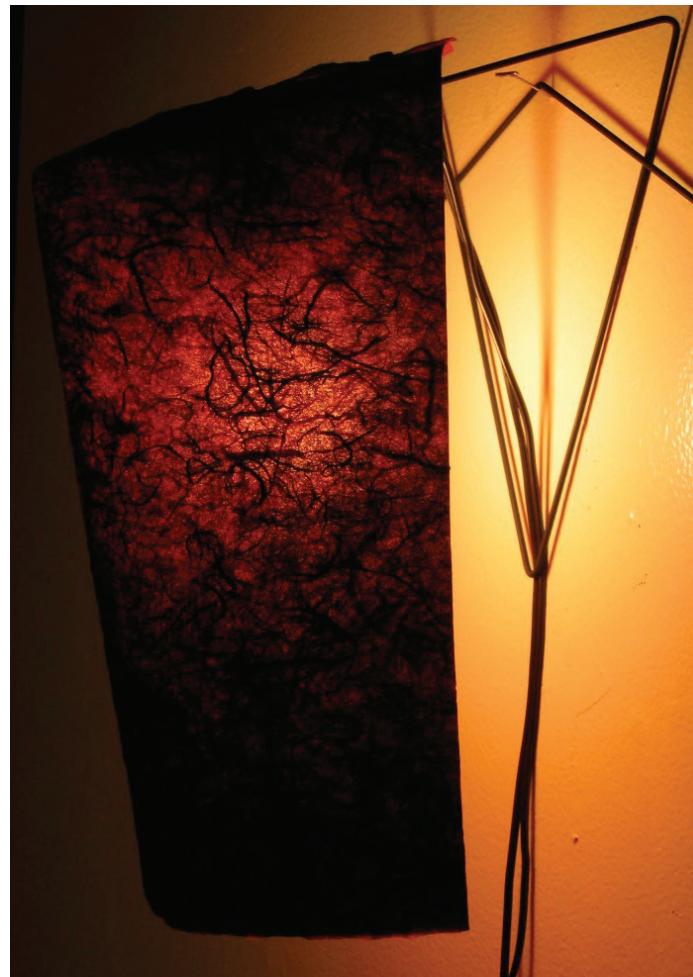


material to frame in 2 hours.



this isn't it

find the weld!







From ideation to consumer.

**Online and retail stores
from Alaska to Louisiana.**

